



VMware Workstation 7

The Gold Standard in Desktop Virtualization

AT A GLANCE

VMware® Workstation is the gold standard in desktop virtualization, transforming the way technical professionals develop, test, demo and deploy software. Innovative features help developers, QA engineers, sales professionals and IT administrators reduce hardware costs, manage risk and streamline tasks, saving time and improving productivity.

BENEFITS

- Run multiple operating systems at the same time without rebooting.
- Evaluate and test new operating systems, applications and patches in an isolated environment.
- Facilitate fast, efficient testing of applications across a large number of configurations.
- Quickly debug applications on multiple platforms with developer tool integration.
- Easily revert your virtual machine to a prior, stable system state

What is VMware Workstation?

From the creator of PC virtualization comes the most reliable, secure way to run multiple operating systems at the same time. Winner of more than 50 industry awards, VMware Workstation is an integral component of any serious technical professional's toolkit.

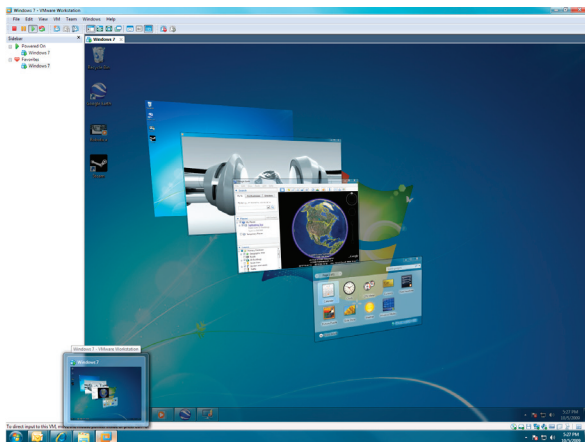
VMware Workstation provides the most dependable, high-performing, and secure virtual machine platform. It offers the broadest host and guest operating system support, the richest user experience, and the most comprehensive feature set.

How is VMware Workstation Used in the Enterprise?

VMware Workstation delivers the broadest guest platform support for running multiple operating systems at the same time on a PC. VMware Workstation supports over 200 operating systems, including Windows 7, Windows Server 2008 R2 and over 20 other versions of Windows along with Redhat, Ubuntu, OpenSuse and 26 additional versions of Linux. And now VMware Workstation can run VMware vSphere™ and VMware ESXi™ for testing or demonstration purposes right on your PC.

Following are the ways in which VMware Workstation is used in the Enterprise:

- Software developers rely on Workstation's integration with Visual Studio, Eclipse and the SpringSource Tools Suite to streamline the development and debugging of their applications in multiple environments.
- Quality assurance teams use Workstation to efficiently and economically test applications on a complex matrix of operating systems, application platforms, and browsers and by doing away with repetitive configuration tasks.
- Systems engineers and other technical sales professionals use Workstation to demonstrate complex multi-tier applications with ease. Workstation can simulate an entire virtual network environment—including clients, servers and database virtual machines—all on a single PC.
- Teachers and trainers use Workstation to rapidly create virtual machines for students, with all the lessons, applications and tools required for the course within a secure, isolated virtual machine. At the end of each class, the virtual machines can revert automatically to a "clean" state, making them readily available for the next set of students.



VMware Workstation was the first to do 3D graphics and is now the first to do Windows Aero in Windows Vista and Windows 7 virtual machines.

KEY FEATURES

How Does VMware Workstation Work?

VMware virtualization software maps physical hardware resources to the virtual machine's resources so that each virtual machine is equipped with its own CPU, memory, disks and network interface cards. No rebooting or hard-drive partitioning is required to switch between the virtual machines. Virtual machines are the full equivalent of a standard x86 machine and are able to run most Windows, Linux and other desktop and server operating systems.

In addition to linking virtual machines to physical network adapters, CD-ROM devices, hard disk drives, and USB devices (including USB Isochronous devices such as webcams, microphones etc), VMware Workstation also provides the ability to simulate additional hardware. For example, it can mount an ISO file as a CD-ROM, and .vmdk files as hard disks; and can configure its virtual network adapter to use network address translation (NAT) through the host machine rather than assigning an IP address for each virtual machine.

Key Features of VMware Workstation

Seamlessly integrated. Unity mode integrates applications from within Windows & Linux virtual machines and makes them appear they are running on the native desktop. User friendly features such as picture cut and paste, email attachment drag and drop, and driverless printing make it easy to work in a virtual machine.

Snapshots and clones. Snapshots preserve the state of a virtual machine so you can return to it at any time. Snapshots are useful when you need to revert your virtual machine to a prior, stable system state. Workstation makes it easy to find and revert to a previously saved snapshot.

Installing operating systems and applications can be time consuming. With clones, you can make many copies of a virtual machine from the baseline installation and configuration. This makes it fast and simple to maintain standardized computing environments for employees and students, or to create a baseline configuration for testing.

Run multi-tiered applications on a single PC. Manage multiple, network-connected virtual machines with Teams. Teams make it easy to start and run complex multi-tier enterprise applications on a single PC with just a click of the mouse.

Rewind and replay until you find the Bug. Diagnose non-deterministic bugs with the Replay Debugging technology integrated into Visual Studio and Eclipse. Test your applications running in virtual machines while "recording," then let the developer step through the recording with a debugger attached. Never again will there be a non-reproducible bug.

Printing that Just Works. Driverless printing makes your PC printers automatically accessible to your Windows and Linux virtual machines; no configuration or drivers are required. Your PC's default printer even shows up as the default.

Find Out More

For information or to purchase VMware products, call 1-877-4VMWARE (outside of North America dial +1-650-427-5000), visit www.vmware.com/products, or search online for an authorized reseller. For detailed product specifications and systems requirements, please refer to the Workstation install and configure guide.